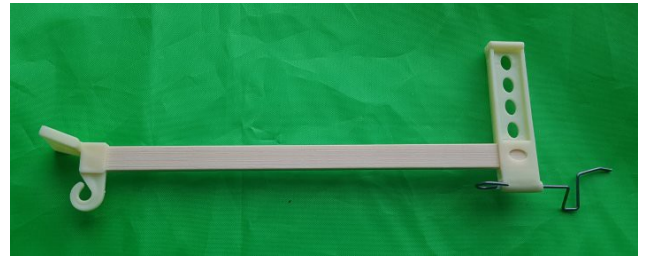


Carefully push the plastic pieces on to the main wooden spar oriented as in the photo.



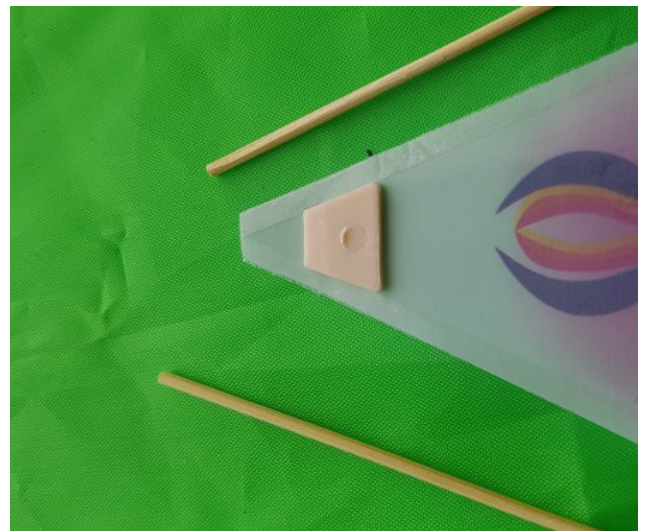
Take the smaller plastic film (the tail) and lay out flat. You may want to gently fold any creases back to flatten, but please be gentle.
Find the pieces as shown, ie the 2 shorter lengths of cane, the plastic tail support and gently tear off 2 strips of the double sided tape.



Stick both pieces of double sided adhesive to the long sides of the tail and cut off any excess.

Tip, only peel 30-50mm of tape first, place this on the film and slowly unpeel the backing paper as you go along the length, keeping the film firmly flat, but not over tight.

Place the adhesive as close as you can to the edge of the film.



Remove the top paper from the tape completely on one side.

Place the plastic piece on the tail as shown, ie just inside the glue line, then gently place one of the canes down to align as shown. Sometimes the plastic piece has a moulding burr on the flat surface. Trim this off before starting.

Press down firmly, and slightly roll the edge of the film up the outer edge of the cane to smooth off.

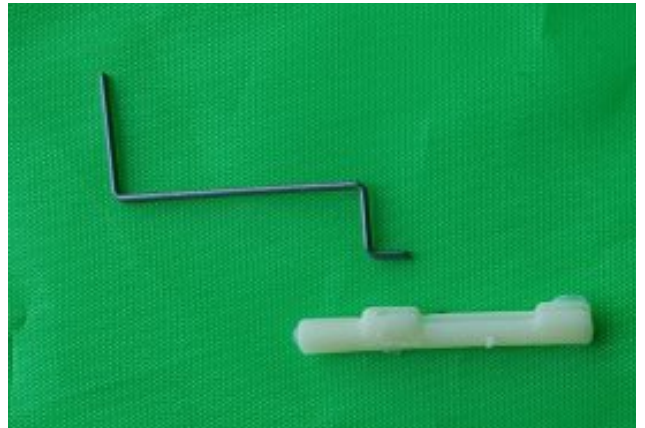


Repeat with the other edge and the fold the small triangle of film at the front over on to the plastic piece and press to stick.

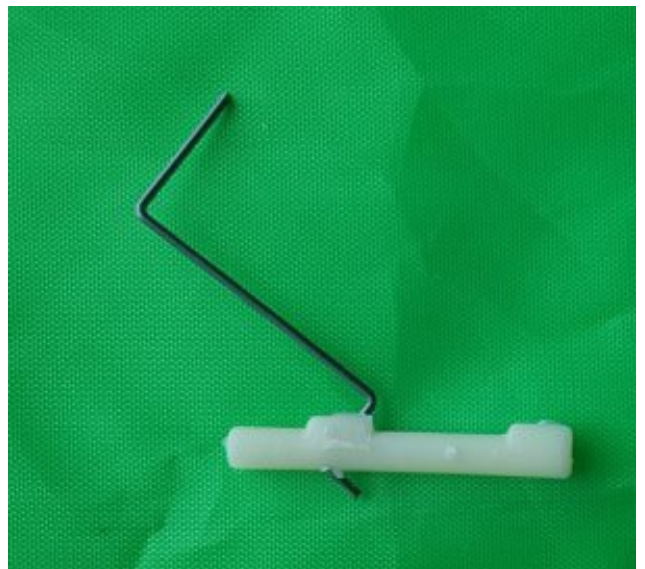
The completed tail should look as here. Put to one side.



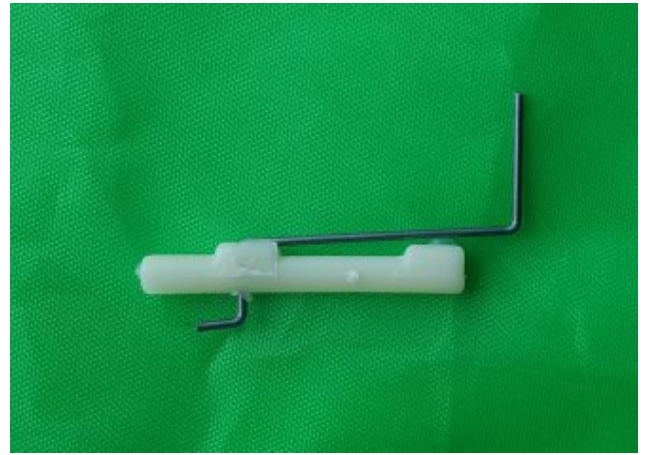
Find the pieces as shown and align as shown.



You will see there is a small hole at the bottom of a slot through which to push the end of the wire,. Push through from the slot side.



Once you have pushed the wire part way through so the leg is showing on the other side, rotate the wire 180 degrees so the leg through points to the shorter end.



Push the longer leg of wire down in to the slot so the completed item looks as here.

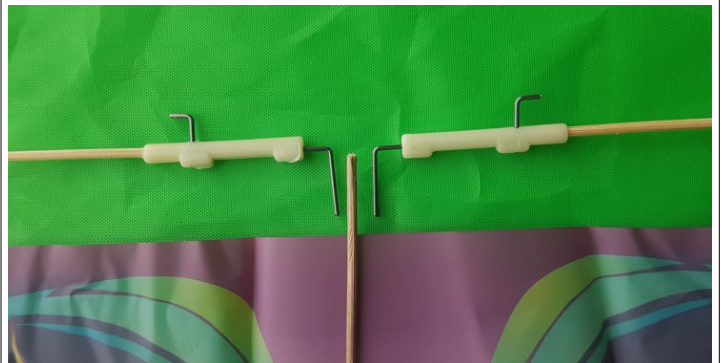
Repeat for the other one.



Push the 2 longer canes in to the ends of the plastic pieces and orient as shown.

Lay the short cane on the wing front to back in the center. This is to show you the alignment of things so you can stick down the longer canes and the plastic supports they fit in to.

Using the same technique as you used for the tail, apply the double sided tape to the front edge of the film. Place the tape so you have enough to tape down the cane and the plastic supports. Remember to place the tape as close to the front edge as possible.



Place the short cane in to the center hole of the main spar plastic piece.

The front of the plastic piece that is attached to the spar aligns at the front of the wing



Place double sided tape on the centerline of the wing using the design to help you.
Once in place, peel off backing and stick the center cane on while it is pushed in to the plastic. The cane should come right through the plastic and be flush at the front.



Get the 2 rods ready.



Lift the center spar up as shown and place one rod on the main crankshaft as far as shown.



You can then put the other end of the rod on to the wire attached to the wing.



Gently slide both ends of the rod so they turn 90 degrees and the rod is flat side front to back.



Repeat for the other rod, then press the end cap on the wire.

You will see a small plastic piece (should be the only piece left). This clips on to the main spar and holds the front of the spar in place and can be used to slightly stretch out the film front to back.

Check everything looks as it does here.

That's it, almost.

If you gently hold the bird by the main spar, you should be able to gently turn the front wire cover and the bird wings should evenly flap up and down. If you feel any resistance as you turn, you may need to slightly bend the wire to even out the pressure between sides. Be careful to do this, a set of needlenose pliers is a good help.

Once it all feels right, you can attach all 3 rubber bands to each end of the hooks. Do this carefully and don't let the rubber bands spring too hard.



Don't rush out and fly just yet. You need to push the tail in to the end of the plastic slot on the main spar firmly.

Hopefully your bird looks as below.

Use care when winding the rubber band up. Do not overtighten.

For your first flight, I would recommend to gently launch the bird with wings horizontal as a glider with no rubber band power.

If it's not quite right, or the tail needs adjusting, experiment till you have it right.

Once the bird glides nicely, you can carefully try winding up the rubber band by holding the main spar, and turning the front knob. The front knob is not fixed in place, so after using it to wind, pop it in your pocket before you release the bird for flight. The knob is there to protect your fingers while winding, not meant to be fixed on.

Try 10 or 15 turns initially and work your way up. Don't rush. It will take a few flights for things to settle in to their proper places.

After a few gentle flights, check over the fittings of your bird and make sure things are ok.

The instructions say you can go up to 40 turns on the rubber band, but please do it carefully.

Enjoy!

